

Vapour Liquid Equilibrium Unit

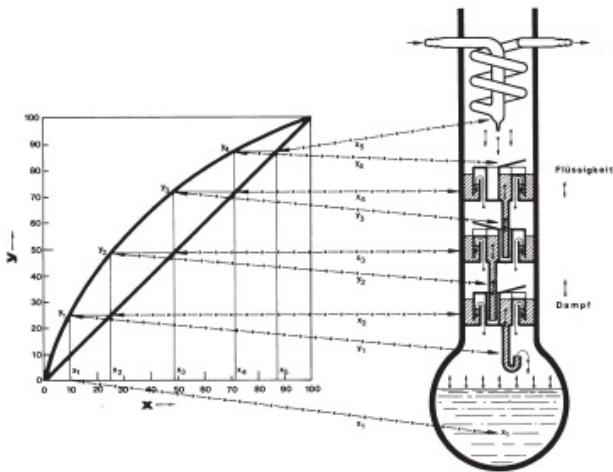
Fischer Labodest VLE 602-D

Purpose

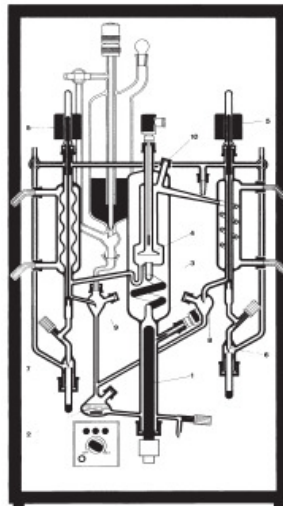
The FISCHER technology® VLE can be applied for measuring equilibrium data and evaluation of equilibrium curves. These curves are used for the calculation of separation efficiencies of distillation columns. The basic data determined from this VLE unit can also be used to validate thermodynamic models.

Equilibrium curve

In the figure below the relation between an equilibrium curve and a plate column with ideally working plates is presented.



Flowchart of VLE unit



- 10 mbar < P < 4 bara
- 5 < T < 180 °C
- Charge quantity: ± 50 ml

Results

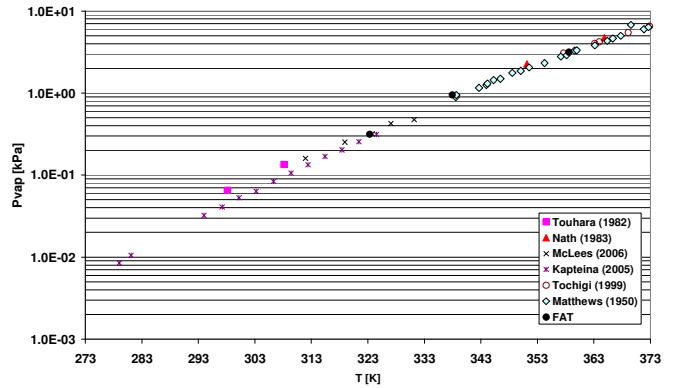


Figure: Results validation tests (FAT) with pure monoethanolamine (MEA)

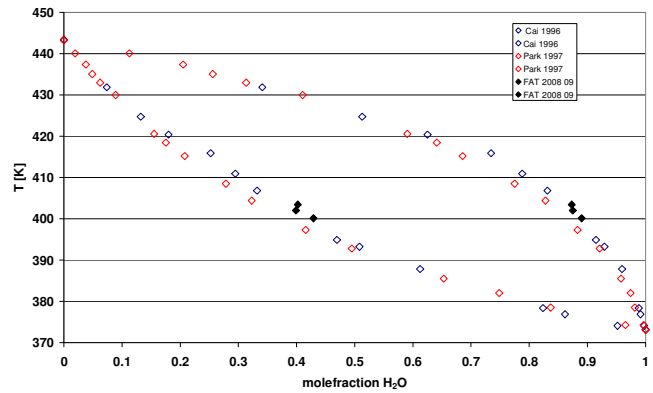


Figure: Results validation tests with aqueous monoethanolamine (MEA)

Contact

- P. Derks + 31 53 7112 513
 P. Huttenhuis + 31 53 7112 508